

The Washington Post

The Washington Post

To brighten a family room, lose the leather sectional and paint the brick fireplace



Accessories: McKenzie round mirror (\$229), Meyers 96-inch drapery panels in taupe (\$129 each) and single 11/4-inch drapery rod, classic ball finials and rings in pewter (prices vary by size), all from ballarddesigns.com; rust metal adjustable pole pharmacy lamp (\$162) and Brighton hammered-pot bronze table lamp (\$130), both from lampsplus.com; Ferrow 18-inch throw pillow (\$45, target.com); Lindon lumbar pillow in spice (\$20, pier1.com); faux potted fiddle-leaf tree (\$299), kiel rope-weave medium basket in gray (\$79) and Chelsea floor lamp base in bronze (\$190) with large linen tapered drum shade in flax (\$69), all from potterybarn.com; "Trees vs. Trees" 24-by-18-inch photographic print with soft white mat and 13/4-inch Gramercy black frame (\$215, art.com); Feast hammered-iron serving bowl (\$40, crateandbarrel.com).

Designing a family room around an inherited Oriental rug



THE CHALLENGE

Janet and Bill Klotz recently inherited an Oriental area rug that they want to incorporate into the 13-by-22-foot family room of their Bowie home. They are having trouble choosing pieces that will complement the rug without being too formal for the space, where they enjoy relaxing, entertaining and watching television. They love the natural brick of their fireplace. The windows and doors are making it challenging for them to find a furniture arrangement that works.



THE PROPOSED SOLUTION

Designer Sarita Simpson keeps the homeowners' leather chair and adds a comfortable sectional sofa in a traditional style to complement the rug.

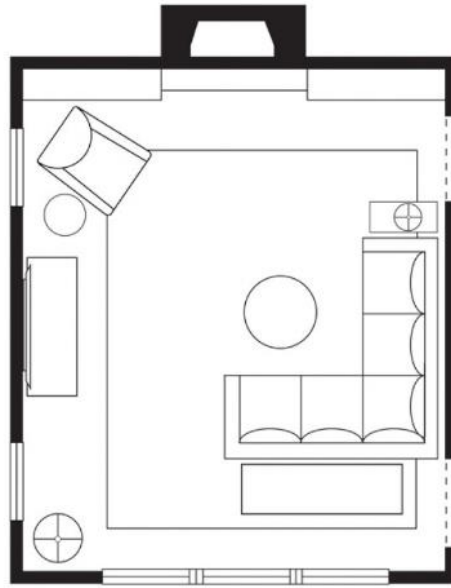


SIMPSON'S SUGGESTIONS

Install full-length curtains to update the window treatments. Extend the rod past the window at least 12 inches on both sides to give the impression of larger windows. Paint the ceiling [Benjamin Moore's Edgecomb Gray](#), one shade lighter than the walls. With that, and the crown molding painted the same color as the walls, the room will feel taller and less narrow. Hang one piece of art above the fireplace to create a focal point. Keep accessories limited to minimize visual clutter. Add visual interest with a dramatic color for the backs of the bookcases. Try [Newburyport Blue from Benjamin Moore](#). Give the room a warm but neutral backdrop that doesn't conflict with the colorful rug. Use [Benjamin Moore's Revere Pewter](#) on the walls, trim and bookcases. Opt for a blue upholstery fabric on the new sectional to break up all the brown and beige in the room. A pair of mirrors over the sofa will reflect light and brighten the room as well as give the illusion of a larger space.



(Courtesy of Sarita Simpson; The Washington Post)



Simpson, with Sarita Simpson Design (703-338-9857, saritasimpsondesign.com), is based in Arlington.

SPLURGE OR SAVE



(Bassett Furniture; Apt 2B)

SPLURGE: Alex left L-shaped sectional in Seamist textured weave (\$3,709, bassettfurniture.com). **SAVE:** Catalina two-piece L-shaped sectional in Woven Beach with Espresso finish (\$1,888, apt2b.com).



(Wayfair; West Elm)



SPLURGE: Accent mirrors (\$250 each, wayfair.com). **SAVE:** Overlapping-squares mirror (\$399, westelm.com).

SHOPPING GUIDE

Furniture: Hemnes sideboard in white stain (\$299, ikea.com); Metropolitan round coffee table in Espresso (\$349, potterybarn.com); Watson sofa/console table (\$250, ashleyfurniturehomestore.com); soft modern round side table in black and clear glass (\$70, target.com); Marla side table in rubbed white (\$199, ballarddesigns.com).

Accessories: [Acrylic stacked ball floor lamp in clear/silver](#) (\$80), [small, fillable clear glass lamp base](#) (\$20) and [large linen drum lamp shade in white](#) (\$20), all from target.com; Trellis clipped jacquard curtains in Belgian flax/ivory (from \$59, westelm.com); standard ball finial drape rod in pewter finish (prices vary by size, potterybarn.com); “Rhythm of Light” 32-by-24-inch print with Rhapsody two-inch frame in wood and metallic tones and white mat (\$365, art.com).

3/2/2017

https://www.washingtonpost.com/lifestyle/home/designing-a-family-room-around-an-inherited-oriental-rug/2017/03/01/d88e5838-f200-11e6-8d72-263470bf0401_story.html?utm_term=.de759d11bce9